



Crossover Quilt (70" x 90")

Above example features fabrics from Anna Maria Textiles
(assorted selections from Indelible, Piecework and Iconic)

Copyright © 2025- Anna Maria Parry * annamariaparry.com

This updated version of Crossover features a mix of fabrics organized very simply by light and dark. It also fills the full squares with slightly larger prints and fills the quarter square triangle blocks with smaller scale prints. This is a very simple approach to featuring your favorite fabrics, and letting them shine alongside simpler prints. While you can easily customize the block size and therefore quilt size to your liking, using a 10" block builds a quilt in not too much time at all.

Materials:

- 3/4 yard each of at least 8 different tonal or small scale prints (4 lighter, 4 darker)
 - or an assorted total of 3 yards of light, and 3 yards of dark
- 3/4 yards each of 12 large scale prints (6 lighter, 6 darker)
 - or an assorted total of 4.5 yards light prints, and 4.5 yards dark prints
- 9 yards of prepared binding in desired width, bias or straight grain
- 5 1/2 yards of 44" wide fabrics for backing
- batting at least 80" x 100"

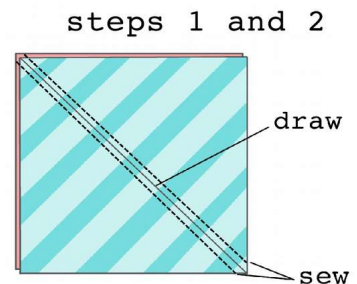
Cutting:

1. Cut 31 assorted squares measuring 10.5" x 10.5" from large scale prints (16 light, 15 dark)
2. Cut 32 assorted squares from tonal, smaller prints that measure 11.5" x 11.5" (16 light, 16 dark)

Sewing Quarter Square Triangles:

Each of the quarter square triangle blocks is made with 2 dark colors meeting on center point and 2 light colors meeting on center point. Imagine a dark hourglass fitting in with a light hourglass in one block.

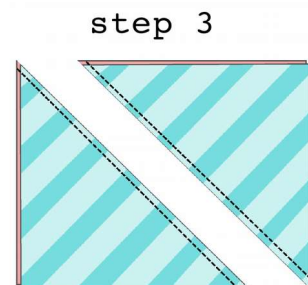
1. Pair two of the 11.5" blocks right sides together, aligning all edges. The pair should be one light fabric and one dark fabric. Using a straight edge and pencil, draw a line on the wrong side of square facing up from one corner to opposite corner.



2. Sew along that line 1/4" to the left of it, and 1/4" to the right of it so that you have two seams.

3. Cut on the drawn line to separate. You now have two identical half-square triangles. Press seam allowances towards dark side.

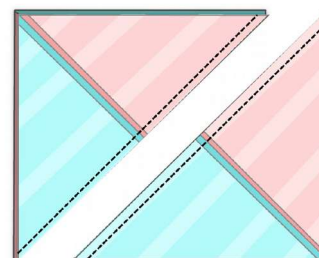
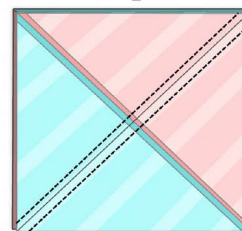
4. Place the two half-square triangles right sides together, but also so that light is laying against dark and dark is laying against light. This will ensure that you achieve the "hourglass" design in your final quarter square triangles.



5. Repeat Steps 1-3 with half-square triangle blocks, making sure that their seams are in line with one another and the drawn and sewn lines cross over the seam at a perpendicular angle.

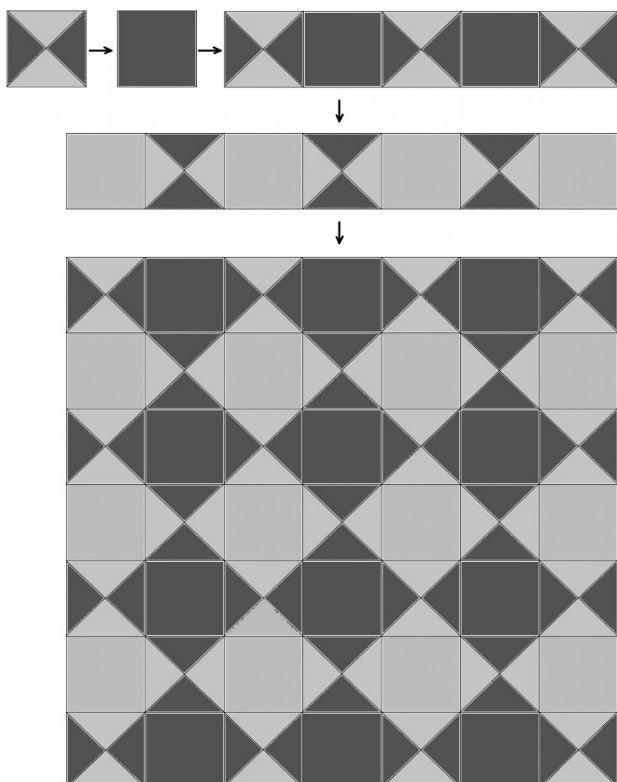
6. Press both blocks well, then trim and square to make sure each quarter-square triangle block is 10.5" x 10.5". Continue until you have 32 quarter square blocks.

step 5



Assembly:

Note: the layout of this quilt involves placing light and dark shades adjacent to each other so that not only is there a grid style pattern happening between the squares, but also so that a diamond checkerboard pattern appears. Finished size is 70 x 90".



1. Using the layout image to the left, alternate and arrange 3 of the 10.5" dark feature squares with 4 of the quarter-square triangles and sew one to the next using 1/4" seam allowances to complete row 1, ensuring dark edges are adjacent.

2. Continue with the next row using 4 light feature squares and 3 quarter-square triangles making sure all light edges are adjacent.

3. Continue alternating the creation of these rows until you have 9.

4. Sew the rows one to the next until the quilt top to complete.

5. Layer with batting and backing before quilting the layers together and finishing with binding.